



110-400-85S

SMOOTH TOP & SIDES

CLOSURE SPECIFICATIONS

Diameter: 110 mm
Thread Profile: 400
Neck Finish: 110-400
Closure Top: Smooth
Closure Sidewall: Smooth
Material: PP

PRODUCT BENEFITS

- » Smooth top and sides lend a "clean" look to the package
- » Popular for vitamins and nutraceuticals
- » Popular for cosmetics

MARKETS

- » Nutraceuticals
- » Personal Care/Cosmetics
- » Pharmaceuticals

OPTIONS

- » Available in white, several standard colors and custom colors
- » Can be lined with a wide variety of liner systems including SureSeal (foam), pressure sensitive and heat induction (foil) liners
- » Off-set printing is available on this closure in up to three colors

PACKAGING & FREIGHT INFORMATION

PACK TYPE	PCS/CTN	CTNS/PALT	PCS/PALT	CTN WT*	PALT WT*	FRT CLASS
Stack	333	15	4,995	15.0000 ⁽¹⁾	260.0000 ⁽¹⁾	125.0 ⁽¹⁾
Stack	333	15	4,995	17.3500 ⁽²⁾	295.2500 ⁽²⁾	150.0 ⁽²⁾

CARTON DIMENSIONS

24 x 16 x 15

PALLET DIMENSIONS

48 x 40 x 50

(1) Unlined Closures

(2) Lined Closures

* Approximate

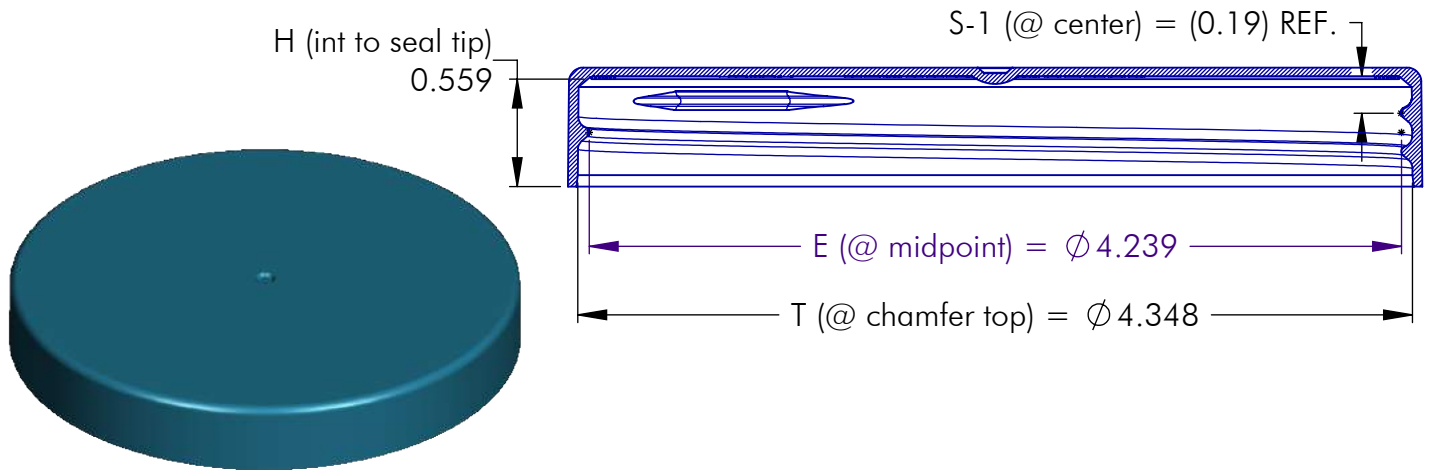
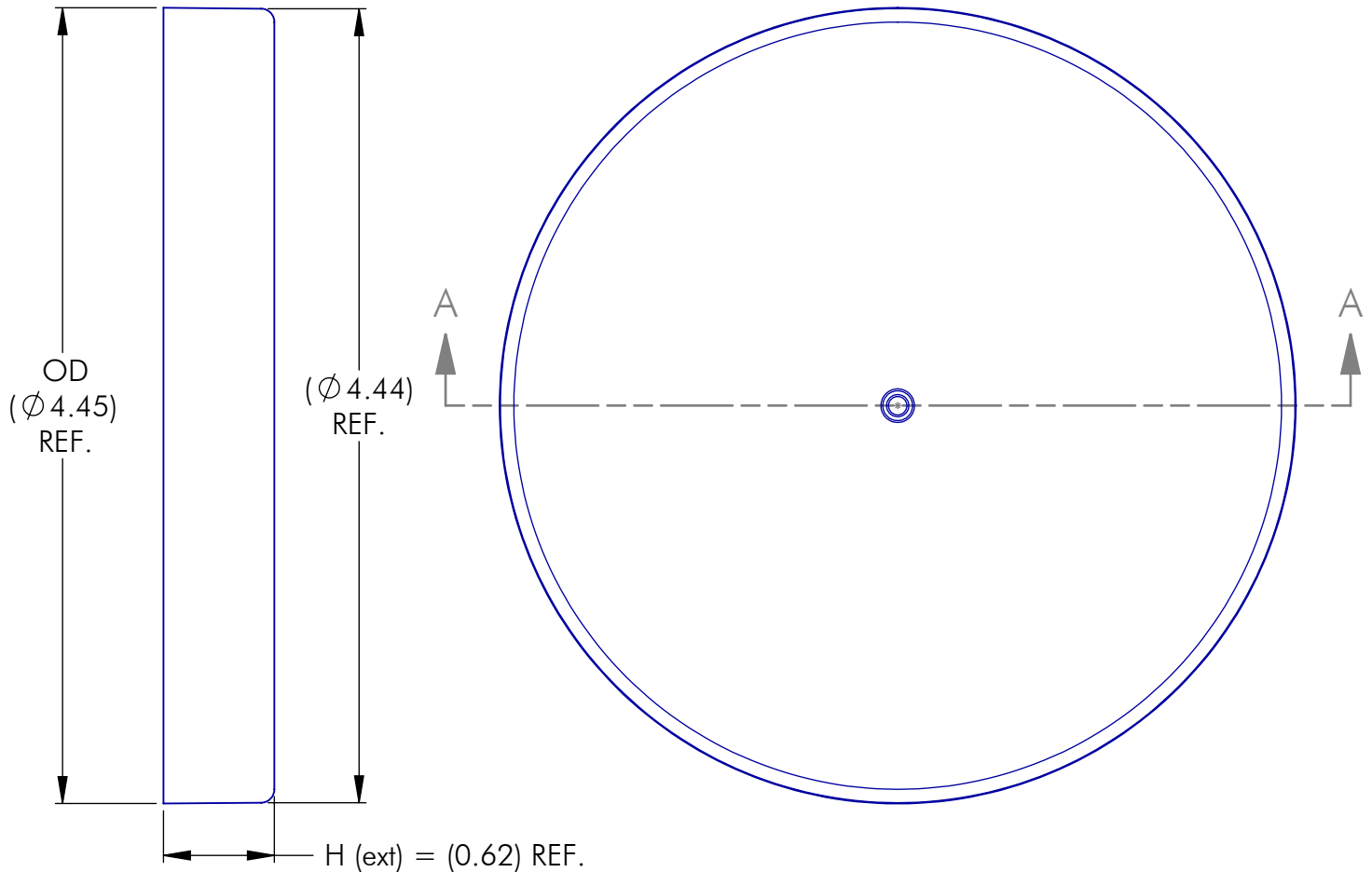
LOCATIONS

NAPERVILLE, IL • NEWPORT, TN • DAVENPORT, IA
 GREENCASTLE, IN • ONTARIO, CA • STAINES, UK



Phoenix Closures, Inc.

Quality and Innovation Since 1890



NOTES: (UNLESS OTHERWISE SPECIFIED)

1. ALL DIMENSIONS ARE IN INCHES.
2. TOLERANCE ON ALL DIMENSIONS IS ± 0.010 " EXCEPT WHERE NOTED AS "REF.".

1	10.28.16	REDUCE TOP CORNER RADIUS	DN	PITCH (TPI): 5	# OF TURNS: 1-1/4	MATERIAL: POLYPROPYLENE
REV	DATE	DESCRIPTION	BY	DRAWING #: 110 - 400 - 85 (S)		SCALE: 1 : 1
<p style="color: red; font-size: small;">THIS OR FACSIMILE THEREOF IS THE EXCLUSIVE PROPERTY OF PHOENIX CLOSURES, INC. AND MAY NOT BE REPRODUCED WITHOUT THE EXPRESSED WRITTEN CONSENT OF PHOENIX CLOSURES, INC. SOME OR ALL OF THE ITEMS DEPICTED ON THIS DRAWING MAY BE COVERED BY CURRENT PATENTS OR PATENTS APPLIED FOR BY PHOENIX CLOSURES, INC.</p>				DESCRIPTION: SMOOTH POLISHED TOP AND SIDES		
				DRAWN BY: DMN	DATE: 09.17.16	APPROVED BY: ---

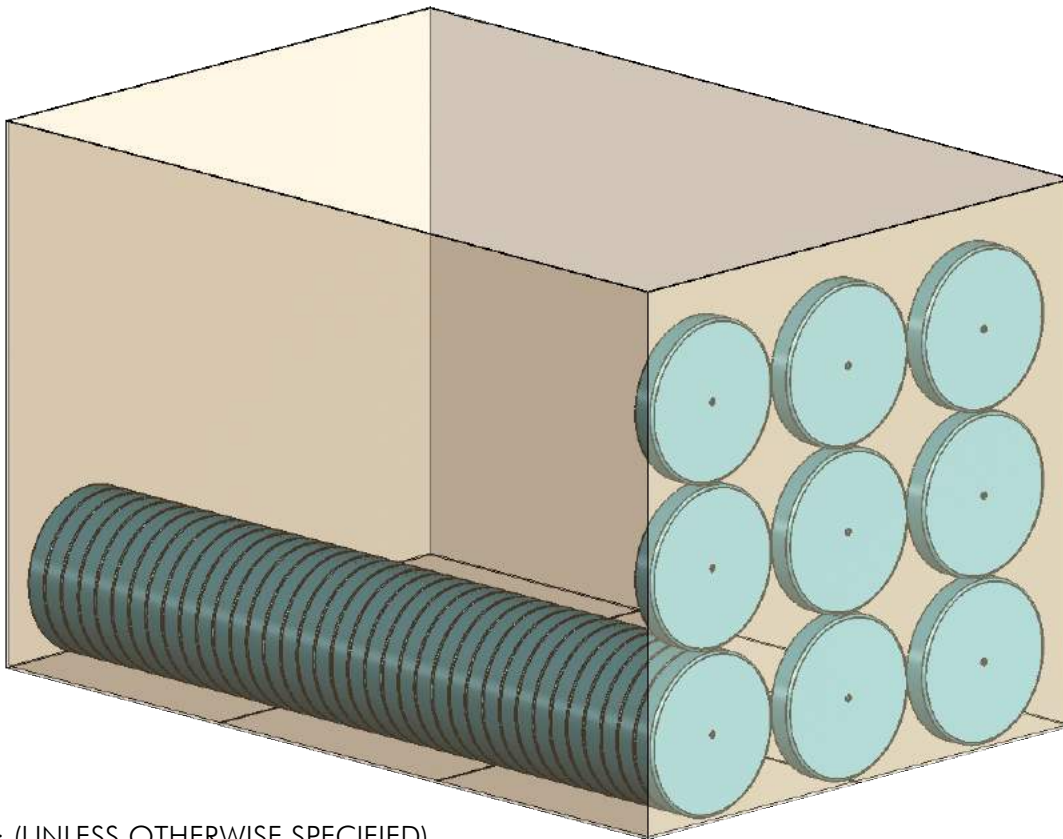
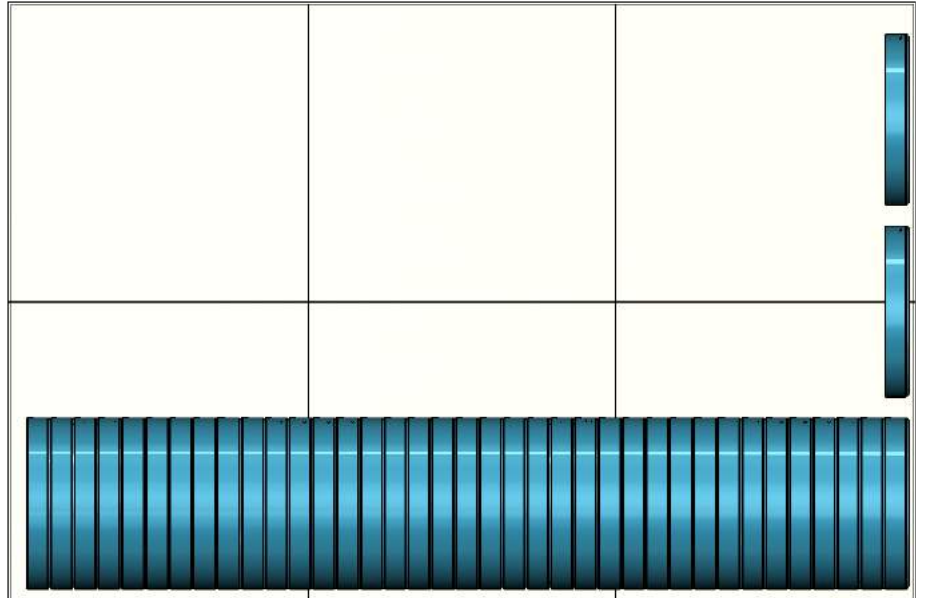


Phoenix Closures, Inc.

Quality and Innovation Since 1890

Carton Layout
 Closures per Row = 37
 Rows per Carton = 9

Pack Count
 333 Caps Total



NOTES: (UNLESS OTHERWISE SPECIFIED)
 1. ALL DIMENSIONS ARE IN INCHES.
 2. TOLERANCE ON ALL DIMENSIONS IS ± 0.010 ".

#	00.00.00	-	--	PITCH (TPI): N/A	# OF TURNS: N/A	MATERIAL:	-
REV	DATE	DESCRIPTION	BY	DRAWING #: 110-400-85 PACK COUNT			SCALE: 1:5
THIS OR FACSIMILE THEREOF IS THE EXCLUSIVE PROPERTY OF PHOENIX CLOSURES, INC. AND MAY NOT BE REPRODUCED WITHOUT THE EXPRESSED WRITTEN CONSENT OF PHOENIX CLOSURES, INC. SOME OR ALL OF THE ITEMS DEPICTED ON THIS DRAWING MAY BE COVERED BY CURRENT PATENTS OR PATENTS APPLIED FOR BY PHOENIX CLOSURES, INC.				DESCRIPTION: 110-400-85 PACK COUNT			
				DRAWN BY: DAA	DATE: 02.22.17	APPROVED BY: XXX	REV: X