

70-400-8511S

**SMOOTH TOP &
SIDES**

CLOSURE SPECIFICATIONS

Diameter: 70 mm
Thread Profile: 400
Neck Finish: 70-400
Closure Top: Smooth
Closure Sidewall: Smooth
Material: PP

MARKETS

- » Nutraceuticals
- » Personal Care/Cosmetics
- » Pharmaceuticals

PRODUCT BENEFITS

- » Smooth top and sides lend a "clean" look to the package
- » Popular for vitamins and nutraceuticals
- » Popular for cosmetics

OPTIONS

- » Available in white, several standard colors and custom colors
- » Can be lined with a wide variety of liner systems including SureSeal (foam), pressure sensitive and heat induction (foil) liners
- » Off-set printing is available on this closure in up to three colors

PACKAGING & FREIGHT INFORMATION

PACK TYPE	PCS/CTN	CTNS/PALT	PCS/PALT	CTN WT*	PALT WT*	FRT CLASS
Bulk	1,000	15	15,000	19.5000 (1)	327.5000 (1)	150.0 (1)
Bulk	1,000	15	15,000	22.1229 (2)	366.8435 (2)	125.0 (2)

CARTON DIMENSIONS

24 x 16 x 15

PALLET DIMENSIONS

48 x 40 x 50

(1) Unlined Closures

(2) Lined Closures

* Approximate

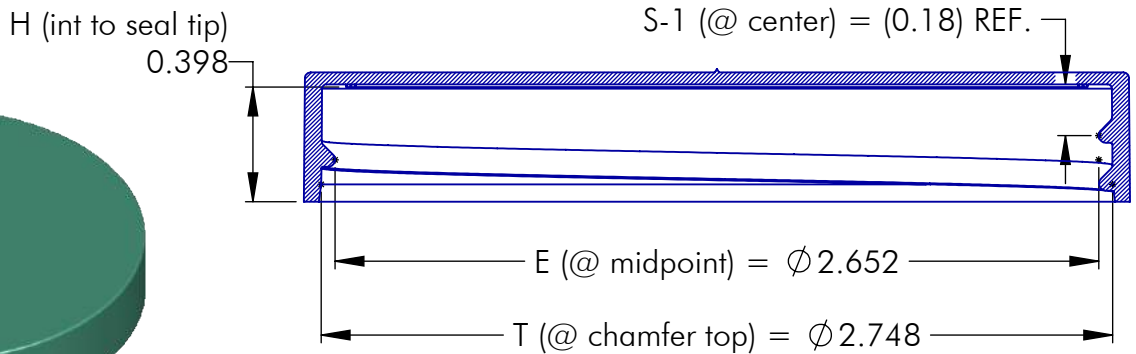
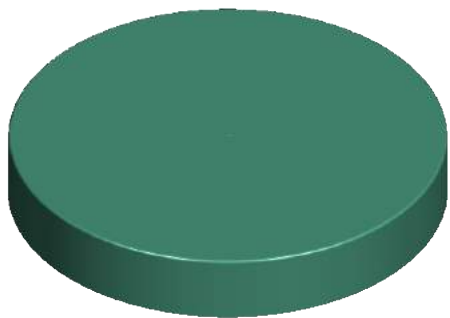
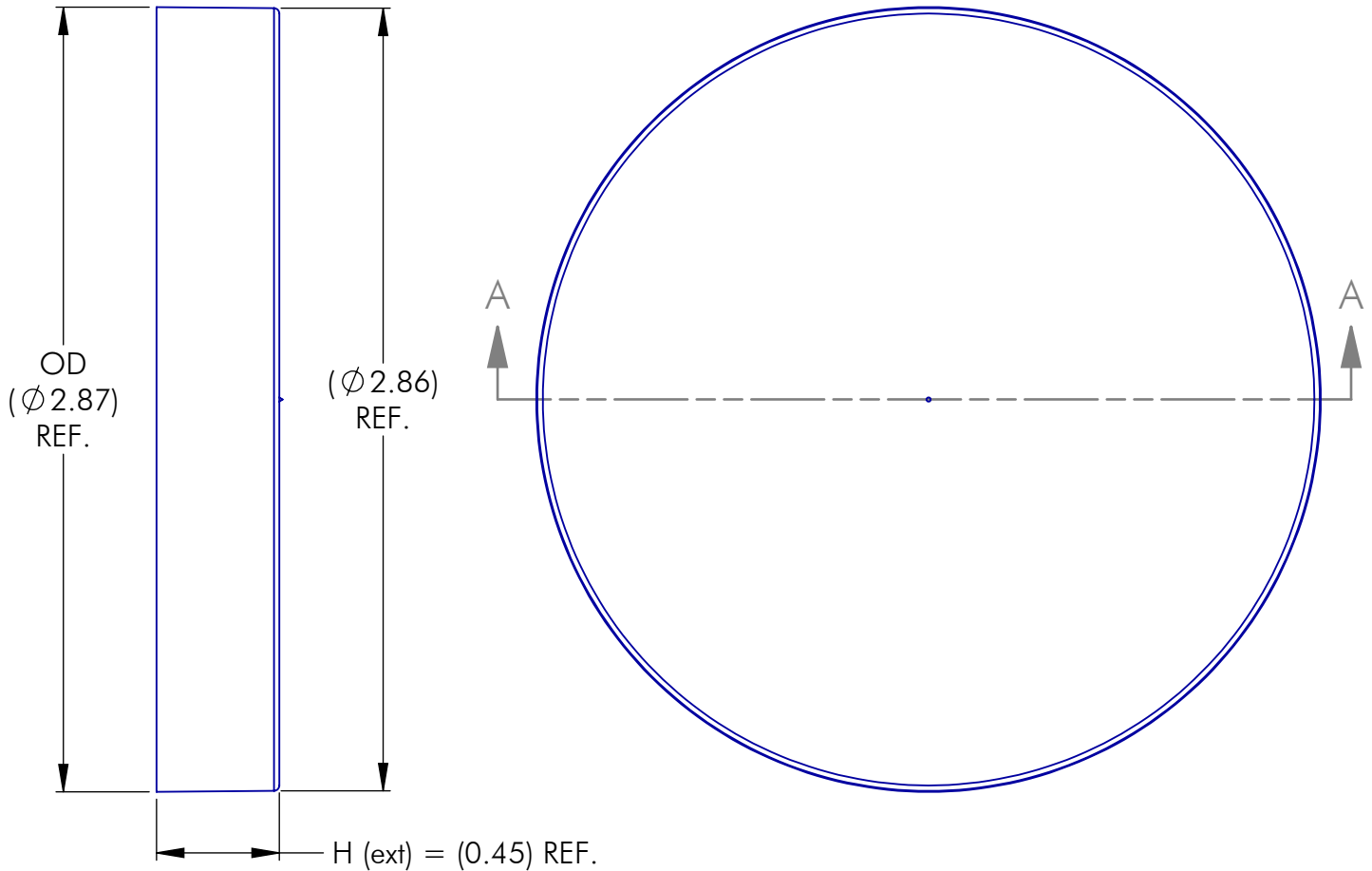
LOCATIONS

NAPERVILLE, IL • NEWPORT, TN • DAVENPORT, IA
 GREENCASTLE, IN • ONTARIO, CA • STAINES, UK



Phoenix Closures, Inc.

Quality and Innovation Since 1890



NOTES: (UNLESS OTHERWISE SPECIFIED)

1. ALL DIMENSIONS ARE IN INCHES.
2. TOLERANCE ON ALL DIMENSIONS IS ± 0.010 " EXCEPT WHERE NOTED AS "REF.".

1	07.01.16	INCREASE OD BY 0.010"	JP	PITCH (TPI): 6	# OF TURNS: 1-1/8	MATERIAL: POLYPROPYLENE
REV	DATE	DESCRIPTION	BY	DRAWING #: 70 - 400 - 8511 (S)		SCALE: 1-1/2 : 1
<p style="color: red; font-size: small;">THIS OR FACSIMILE THEREOF IS THE EXCLUSIVE PROPERTY OF PHOENIX CLOSURES, INC. AND MAY NOT BE REPRODUCED WITHOUT THE EXPRESSED WRITTEN CONSENT OF PHOENIX CLOSURES, INC. SOME OR ALL OF THE ITEMS DEPICTED ON THIS DRAWING MAY BE COVERED BY CURRENT PATENTS OR PATENTS APPLIED FOR BY PHOENIX CLOSURES, INC.</p>				DESCRIPTION: OVERALL SMOOTH FINISH / SHALLOW SKIRT		
				DRAWN BY: TCS	DATE: 06.07.16	APPROVED BY: JP